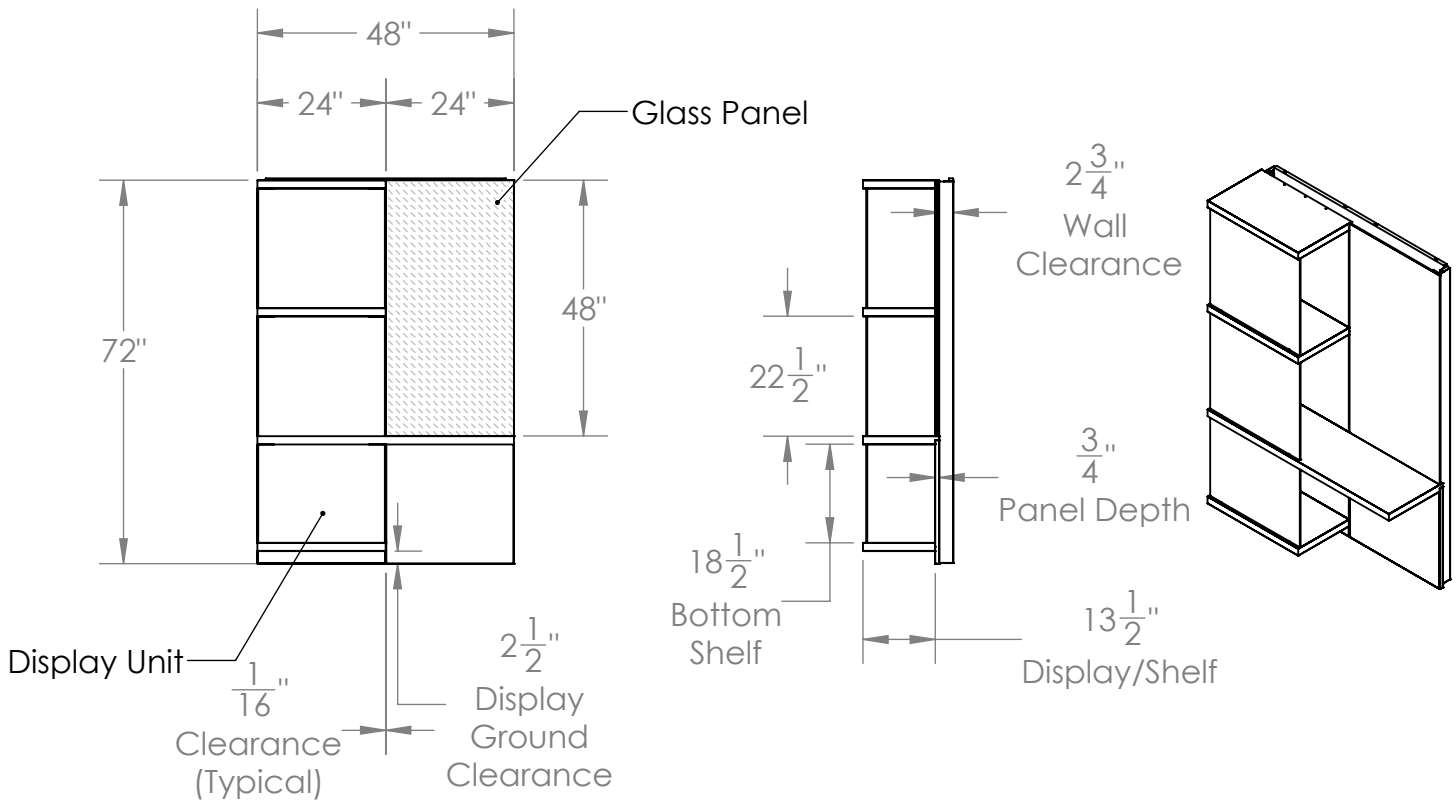


Mythos Wall Mount Display / MYT64AA

Product Specifications



Style AA

Materials:

- Shelf Surface: High pressure laminate.
- Glass Panel: 1/4" thick tempered low iron glass.
- Display: Impact resistant polycarbonate display windows with high pressure laminate shelves.

Features:

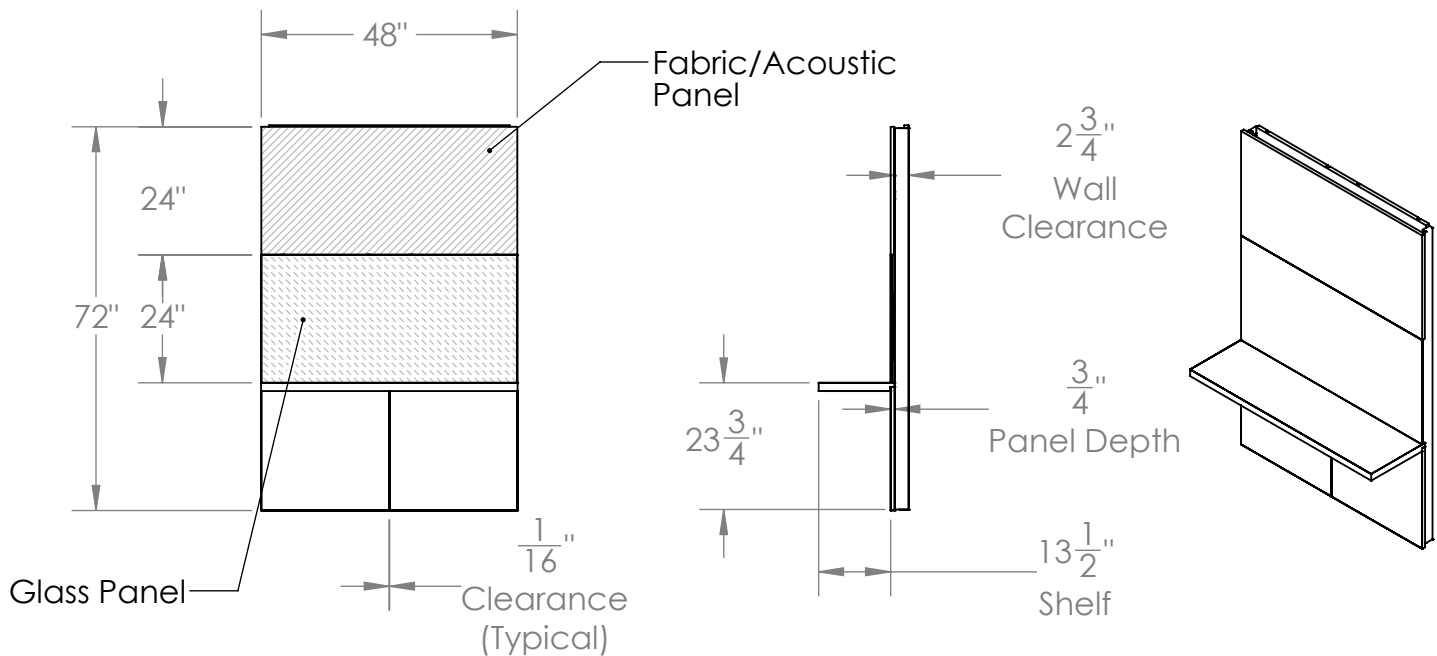
- Proprietary installation fixture for precision alignment.
- Fixed cantilevered shelves with 25 lbs. load rating.
- Display columns feature open sides for easy accessibility.
- Available in standard and custom colors using water based glass paint, graphic printing available.
- Available in standard laminate finishes.
- Limited lifetime warranty.

Notes:

- Product to be installed as pictured, custom configurations available upon request.
- Installation time: Maximum of 1.5 hours with two furniture installers.

Mythos Wall Mount Display / MYT64AB

Product Specifications



Style AB

Materials:

- Shelf Surface: High pressure laminate.
- Glass Panel: 1/4" thick tempered low iron glass.
- Fabric Panel: Maharam fabric tackable panels.
- Acoustic Panel: Acoustic PET panels.

Features:

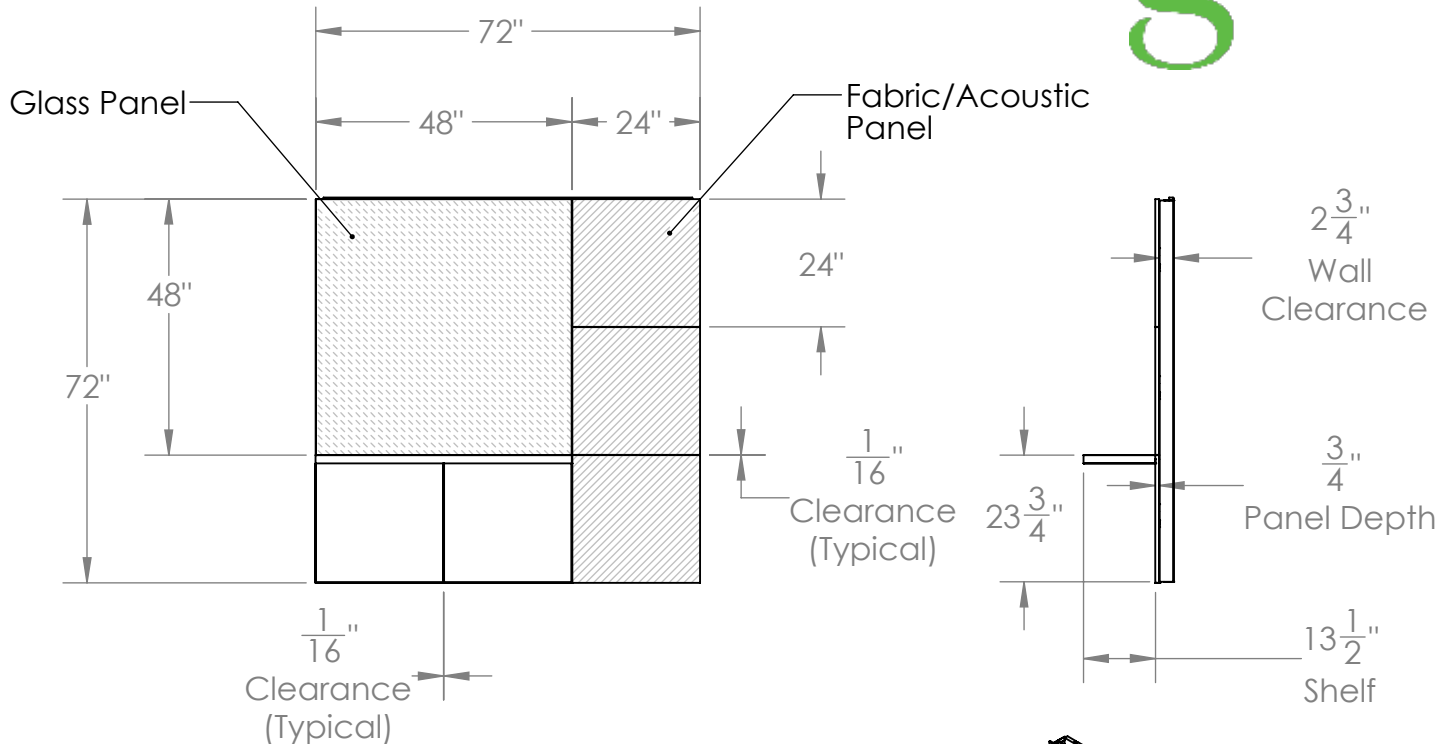
- Proprietary installation fixture for precision alignment.
- Fixed cantilevered shelves with 25 lbs. load rating.
- Available in standard and custom colors using water based glass paint, graphic printing available.
- Available in standard tier 2 fabrics and custom color fabrics.
- Available in standard laminate finishes.
- Available in standard Acoustic PET finishes with an NRC rating of 0.3 with no air gap.
- Limited lifetime warranty.

Notes:

- Product to be installed as pictured, custom configurations available upon request.
- Installation time: Maximum of 1.5 hours with two furniture installers.

Mythos Wall Mount Display / MYT66DA

Product Specifications



Style DA

Materials:

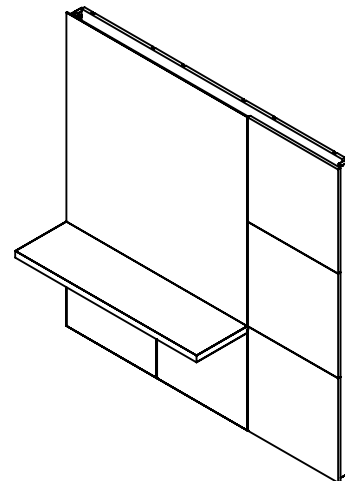
- Shelf Surface: High pressure laminate.
- Glass Panel: 1/4" thick tempered low iron glass.
- Fabric Panel: Maharam fabric tackable panels.
- Acoustic Panel: Acoustic PET panels.

Features:

- Proprietary installation fixture for precision alignment.
- Fixed cantilevered shelves with 25 lbs. load rating.
- Available in standard and custom colors using water based glass paint, graphic printing available.
- Available in standard tier 2 fabrics and custom color fabrics.
- Available in standard laminate finishes.
- Available in standard Acoustic PET finishes with an NRC rating of 0.3 with no air gap.
- Limited lifetime warranty.

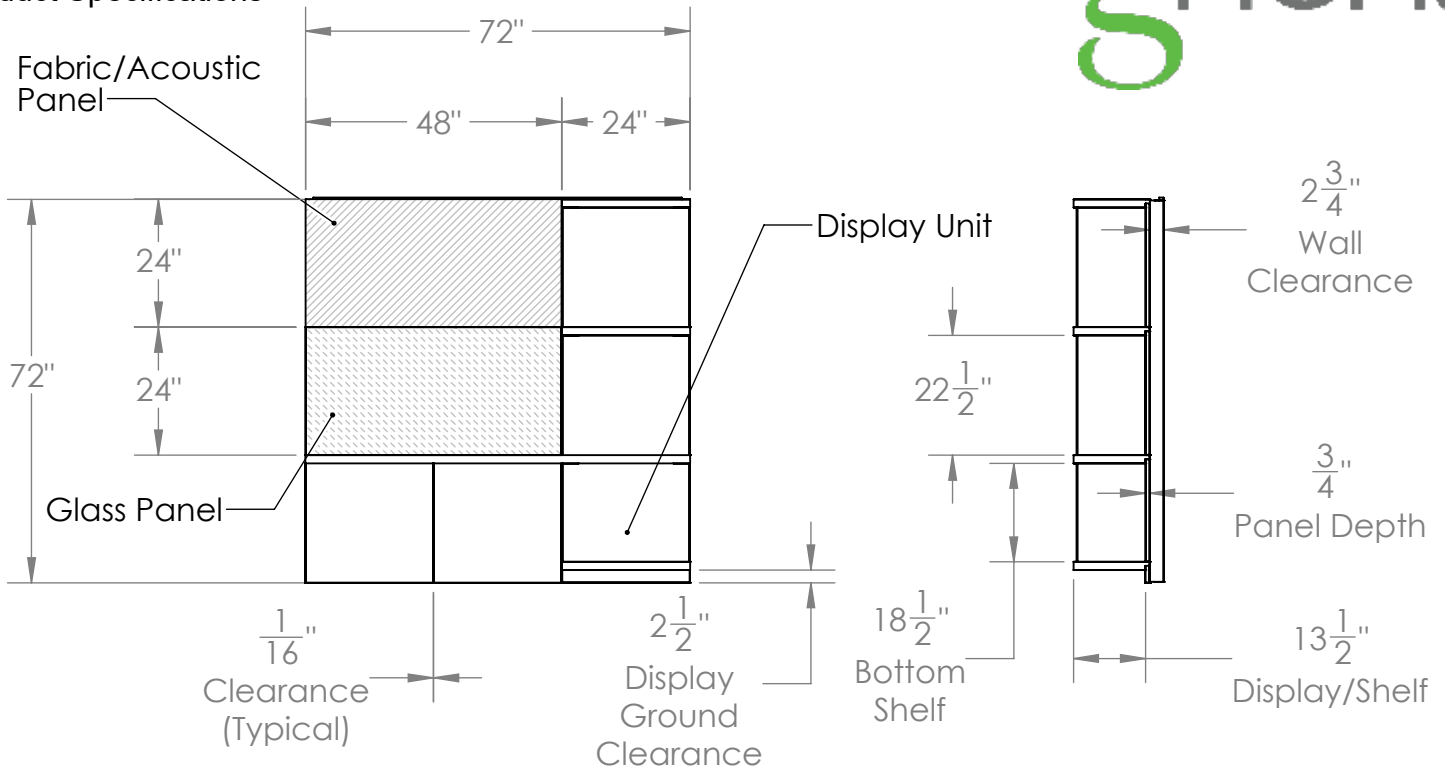
Notes:

- Product to be installed as pictured, custom configurations available upon request.
- Installation time: Maximum of 2 hours with two furniture installers.



Mythos Wall Mount Display / MYT66DB

Product Specifications



Style DB

Materials:

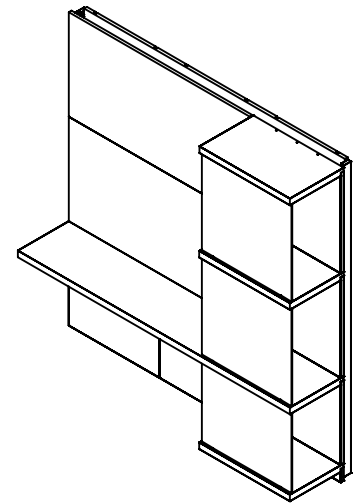
- Shelf Surface: High pressure laminate.
- Glass Panel: 1/4" thick tempered low iron glass.
- Fabric Panel: Maharam fabric tackable panels.
- Acoustic Panel: Acoustic PET panels.
- Display: Impact resistant polycarbonate display windows with high pressure laminate shelves.

Features:

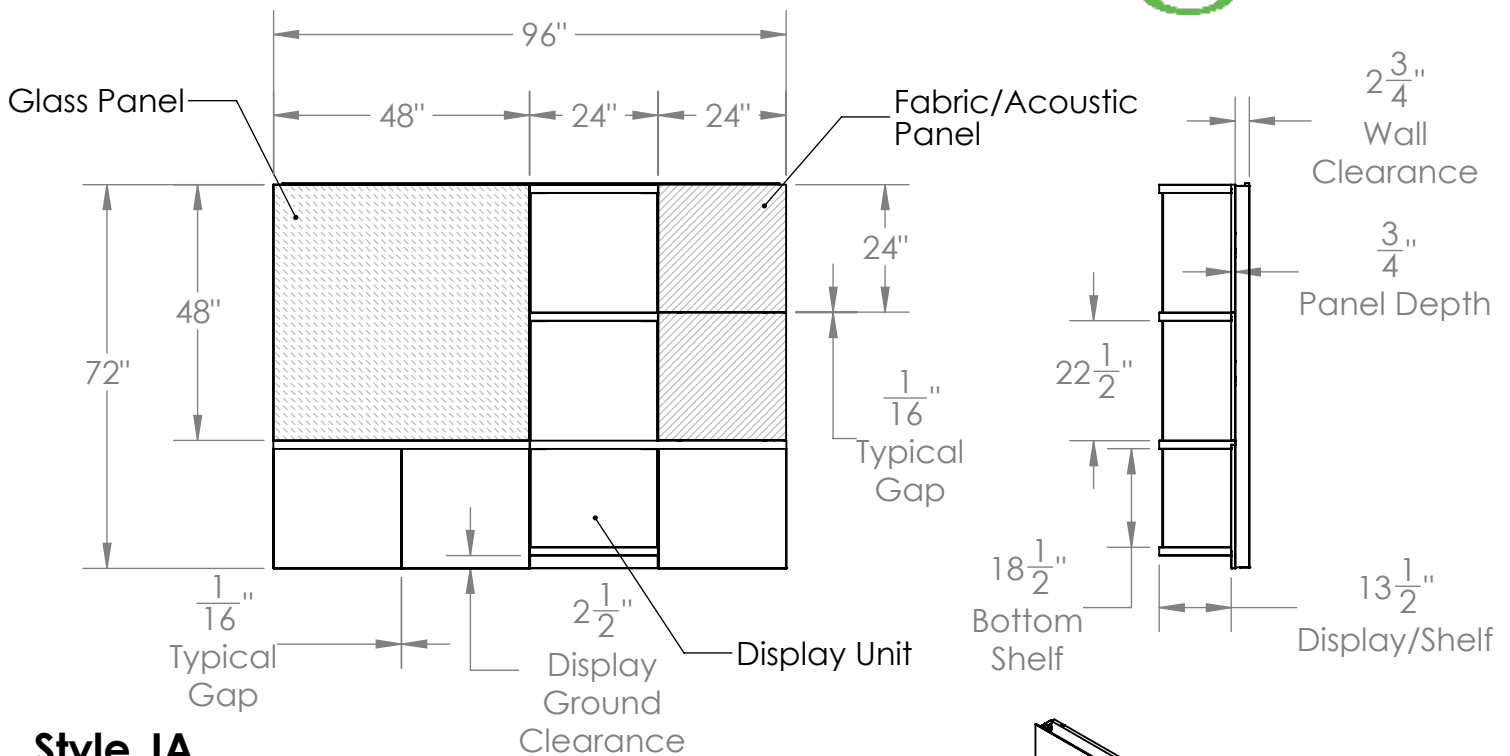
- Proprietary installation fixture for precision alignment.
- Fixed cantilevered shelves with 25 lbs. load rating.
- Display columns feature open sides for easy accessibility.
- Available in standard and custom colors using water based glass paint, graphic printing available.
- Available in standard tier 2 fabrics and custom color fabrics.
- Available in standard laminate finishes.
- Available in standard Acoustic PET finishes with an NRC rating of 0.3 with no air gap.
- Limited lifetime warranty.

Notes:

- Product to be installed as pictured, custom configurations available upon request.
- Installation time: Maximum of 2 hours with two furniture installers.



Product Specifications

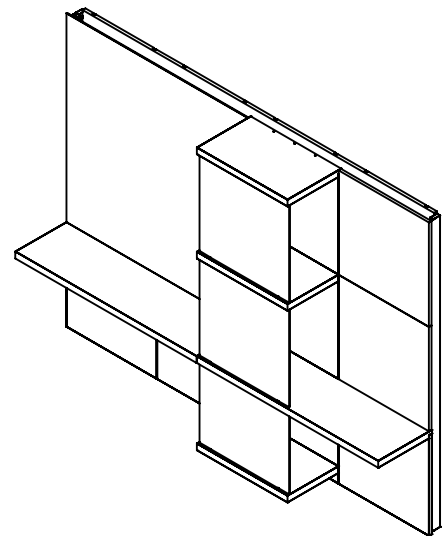


Materials:

- Shelf Surface: High pressure laminate.
- Glass Panel: 1/4" thick tempered low iron glass.
- Fabric Panel: Maharam fabric tackable panels.
- Acoustic Panel: Acoustic PET panels.
- Display: Impact resistant polycarbonate display windows with high pressure laminate shelves.

Features:

- Proprietary installation fixture for precision alignment.
- Fixed cantilevered shelves with 25 lbs. load rating.
- Display columns feature open sides for easy accessibility.
- Available in standard and custom colors using water based glass paint, graphic printing available.
- Available in standard tier 2 fabrics and custom color fabrics.
- Available in standard laminate finishes.
- Available in standard Acoustic PET finishes with an NRC rating of 0.3 with no air gap.
- Limited lifetime warranty.

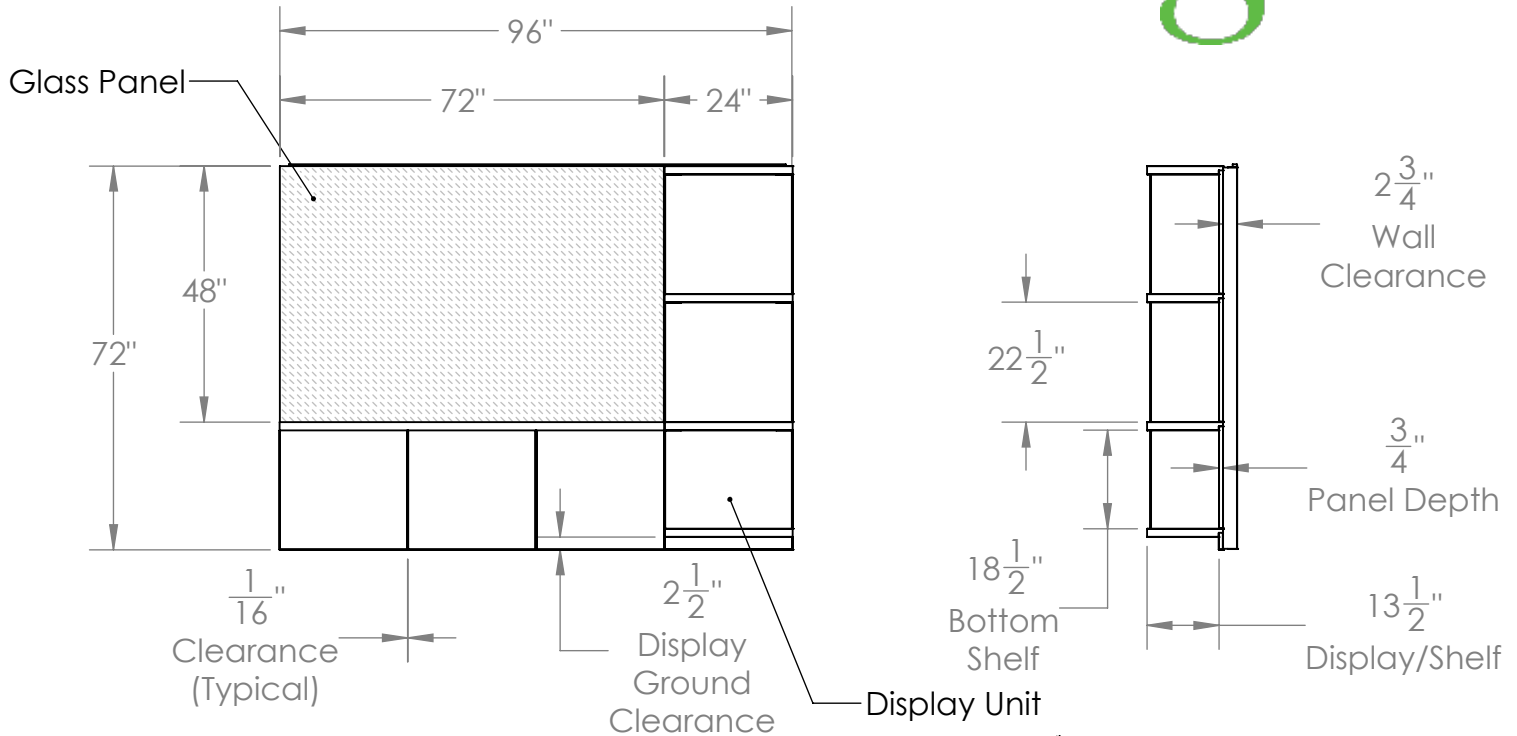


Notes:

- Product to be installed as pictured, custom configurations available upon request.
- Installation time: Maximum of 2.5 hours with two furniture installers.

Mythos Wall Mount Display / MYT68JB

Product Specifications



Style JB

Materials:

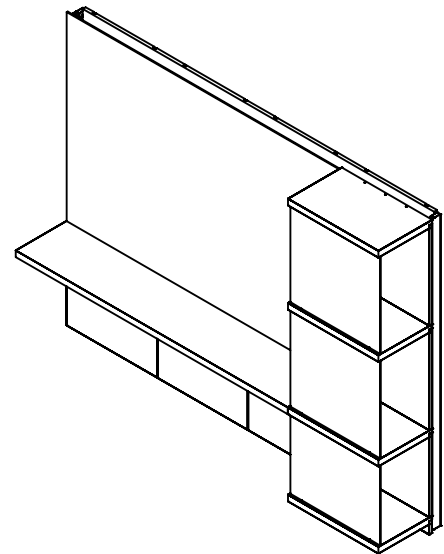
- Shelf Surface: High pressure laminate.
- Glass Panel: 1/4" thick tempered low iron glass.
- Display: Impact resistant polycarbonate display windows with high pressure laminate shelves.

Features:

- Proprietary installation fixture for precision alignment.
- Fixed cantilevered shelves with 25 lbs. load rating.
- Display columns feature open sides for easy accessibility.
- Available in standard and custom colors using water based glass paint, graphic printing available.
- Available in standard laminate finishes.
- Limited lifetime warranty.

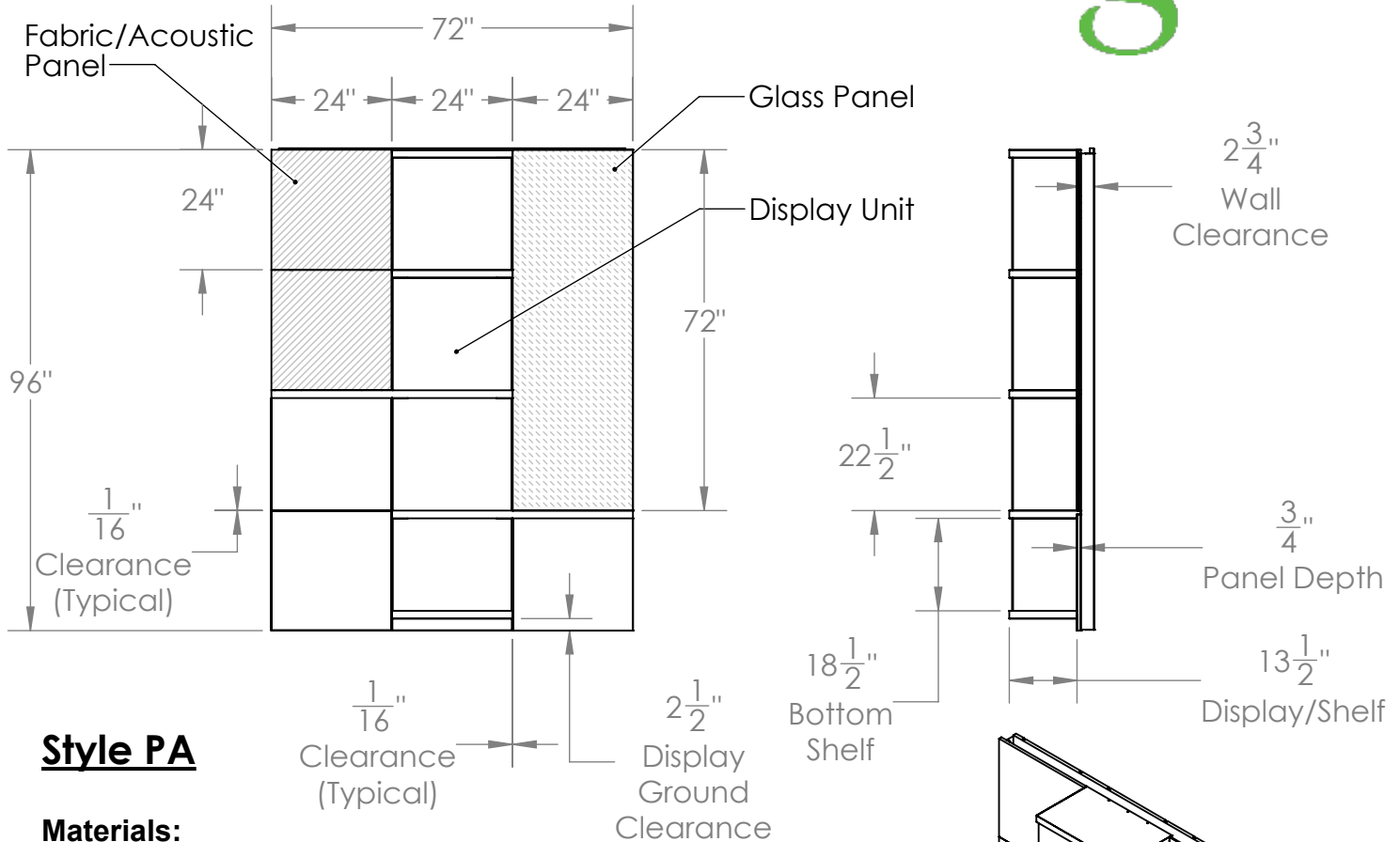
Notes:

- Product to be installed as pictured, custom configurations available upon request.
- Installation time: Maximum of 2.5 hours with two furniture installers.



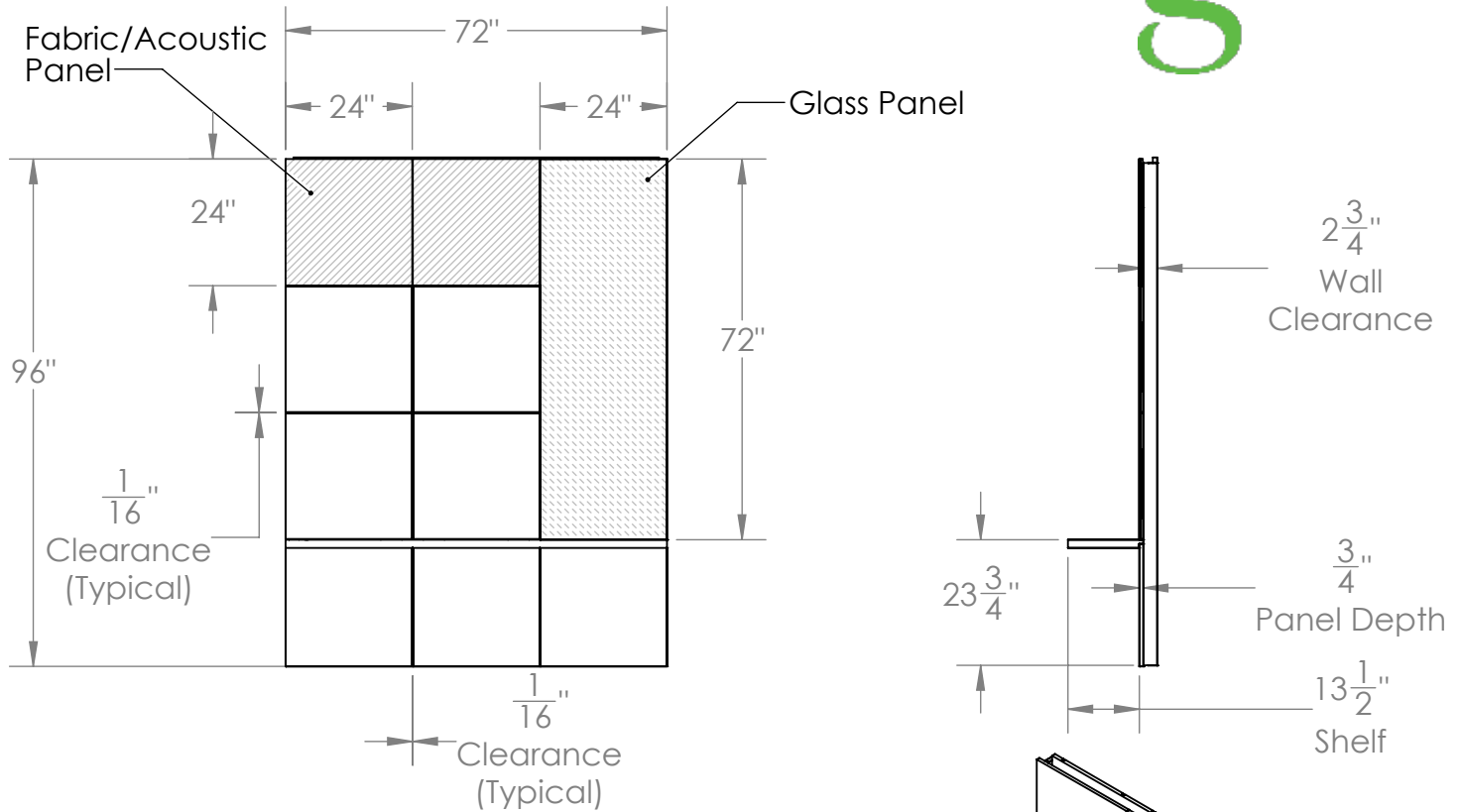
Mythos Wall Mount Display / MYT86PA

Product Specifications



Mythos Wall Mount Display / MYT86PB

Product Specifications



Style PB

Materials:

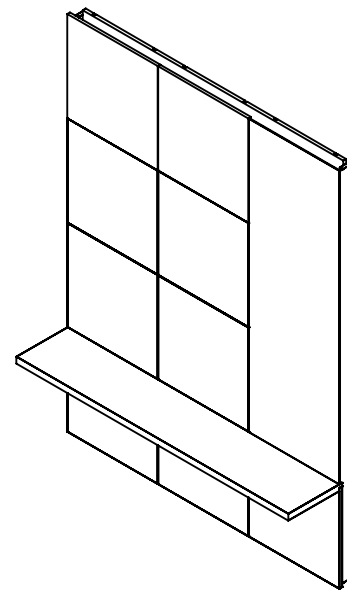
- Shelf Surface: High pressure laminate.
- Glass Panel: 1/4" thick tempered low iron glass.
- Fabric Panel: Maharam fabric tackable panels.
- Acoustic Panel: Acoustic PET panels.

Features:

- Proprietary installation fixture for precision alignment.
- Fixed cantilevered shelves with 25 lbs. load rating.
- Available in standard and custom colors using water based glass paint, graphic printing available.
- Available in standard tier 2 fabrics and custom color fabrics.
- Available in standard laminate finishes.
- Available in standard Acoustic PET finishes with an NRC rating of 0.3 with no air gap.
- Limited lifetime warranty.

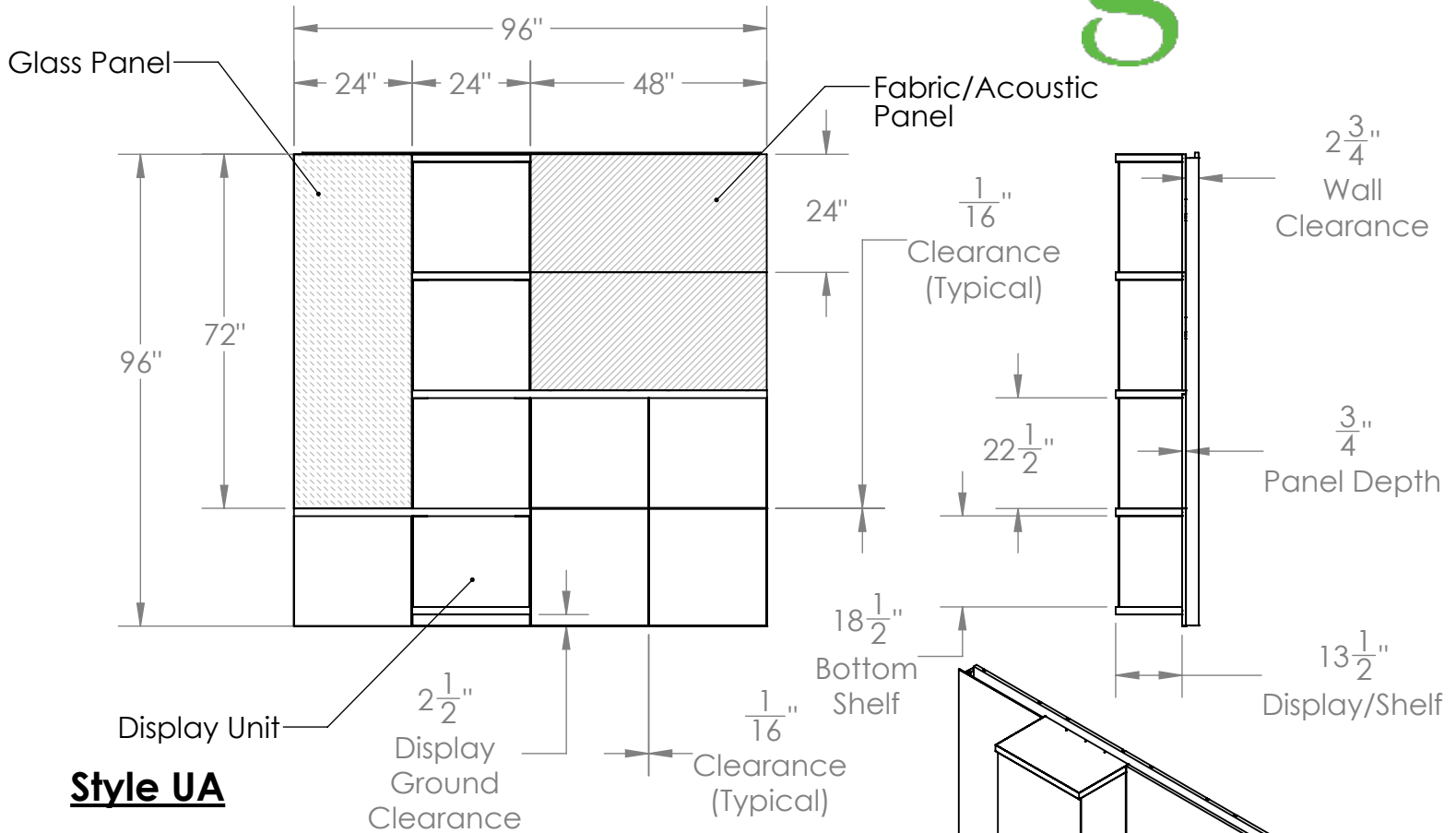
Notes:

- Product to be installed as pictured, custom configurations available upon request.
- Installation time: Maximum of 2.5 hours with two furniture installers.



Mythos Wall Mount Display / MYT88UA

Product Specifications



Style UA

Materials:

- Shelf Surface: High pressure laminate.
- Glass Panel: 1/4" thick tempered low iron glass.
- Fabric Panel: Maharam fabric tackable panels.
- Acoustic Panel: Acoustic PET panels.
- Display: Impact resistant polycarbonate display windows with high pressure laminated shelves.

Features:

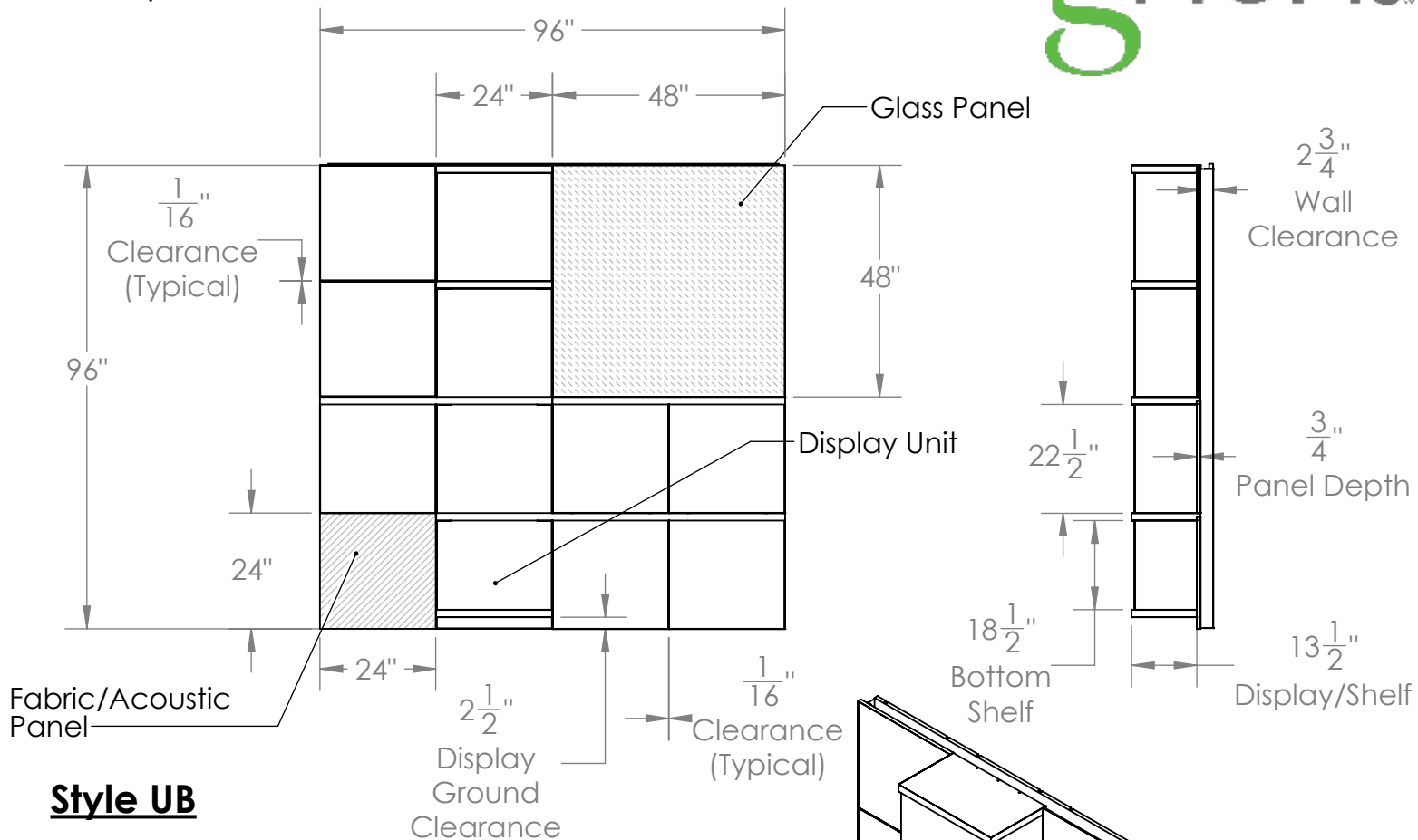
- Proprietary installation fixture for precision alignment.
- Fixed cantilevered shelves with 25 lbs. load rating.
- Display columns feature open sides for easy accessibility.
- Available in standard and custom colors using water based glass paint, graphic printing available.
- Available in standard tier 2 fabrics and custom color fabrics.
- Available in standard laminate finishes.
- Available in standard Acoustic PET finishes with an NRC rating of 0.3 with no air gap.
- Limited lifetime warranty.

Notes:

- Product to be installed as pictured, custom configurations available upon request.
- Installation time: Maximum of 3 hours with two furniture installers.

Mythos Wall Mount Display / MYT88UB

Product Specifications



Style UB

Materials:

- Shelf Surface: High pressure laminate.
- Glass Panel: 1/4" thick tempered low iron glass.
- Fabric Panel: Maharam fabric tackable panels.
- Acoustic Panel: Acoustic PET panels.
- Display: Impact resistant polycarbonate display windows with high pressure laminate shelves.

Features:

- Proprietary installation fixture for precision alignment.
- Fixed cantilevered shelves with 25 lbs. load rating.
- Display columns feature open sides for easy accessibility.
- Available in standard and custom colors using water based glass paint, graphic printing available.
- Available in standard tier 2 fabrics and custom color fabrics.
- Available in standard laminate finishes.
- Available in standard Acoustic PET finishes with an NRC rating of 0.3 with no air gap.
- Limited lifetime warranty.

Notes:

- Product to be installed as pictured, custom configurations available upon request.
- Installation time: Maximum of 3 hours with two furniture installers.