



Silhouette Series – Enclosed Tackboards

Materials:

- Units with Flair Performance Fabric tack panels have clear satin anodized aluminum top and bottom frames and black satin anodized side frames
- Units with PremaTak Vinyl tack panels have clear satin anodized aluminum top, bottom and side frames
- Door – 1/4" thick tempered glass
- Tack panels – 3/8" thick fiber board covered in either Flair Performance Fabric or PremaTak Vinyl fabric
- Door lock and hinges – chrome-plated steel
- Door lock mount plate – polished stainless steel
- Corners – black thermoplastic

Notes:

- Unit weight – 31 lbs. Shipping weight – 40 lbs.
- Ships standard FedEx and UPS

Flair Performance Fabric Colors and Part Numbers:

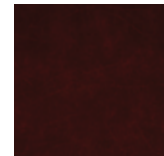
Self healing distressed faux leather.



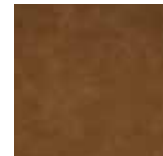
201 – Twilight
SILH20403



202 – Forest
SILH20405



203 – Cabernet
SILH20404



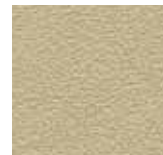
204 – Camel
SILH20402



205 – Charcoal
SILH20401

PremaTak Vinyl Colors and Part Numbers:

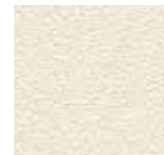
Fabric-backed woven design with textured surface to mask pin holes.



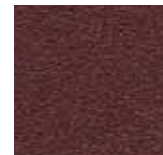
181 – Caramel
SILH20410



183 – Ebony
SILH20411



185 – Ivory
SILH20412



187 – Berry
SILH20413



189 – Mint
SILH20414



191 – Ocean
SILH20415



193 – Silver
SILH20416



195 – Navy
SILH20417



197 – Spruce
SILH20418



199 – Stone
SILH20419



“I love the full, unobstructed view!”



Silhouette is sleek and thin with an overall thickness of 1 7/8" inches deep and features a convex framed top and bottom in a satin aluminum finish with minimal side frames.



Communicate with style.

Silhouette provides an upscale appearance for a wall-mounted enclosed tackboard with a sleek, contemporary look that maximizes the viewing and display area. Silhouette's modular design allows for multiple units to be mounted side by side.

Silhouette is the perfect enclosed message center when an upscale, design-sensitive directory is preferred for executive and customer-accessible lobbies, entranceways, hallways and common areas.

- **Innovation** – Silhouette's design features are based on extensive customer research with users of traditional enclosed boards. Its size was specifically chosen to allow for nine letter-sized sheets of paper.
- **Full View** – unframed tempered glass door and minimal sides allow for full viewing of what is on display.
- **Flexibility** – no designated top or bottom permits the user to mount Silhouette so the hinged door opens either to the left or right.
- **Quality** – made from extruded aluminum framing and tempered safety glass, Silhouette is built to last and is backed by a 10-year warranty.
- **Configurable** – Silhouette's modular design allows the freedom to use one or numerous units side-by-side depending on the need.
- **Aesthetics** – Silhouette features a convex-shaped top and bottom with minimal sides for a clean, modern appearance. The unframed clear glass door adds to the uncluttered styling. Available with two styles of tackboard in a variety of colors. (See back cover for colors.)

